

## ACTIVITY ZONES

Activity zones allow children to role play as scientists in order to gain a better understanding of concepts, topics and processes of thinking in scientific disciplines, while providing an experiential base and motivation for further activity and learning.

### A JOURNEY TO SPACE AND COSMIC COLLISION



<b>DATE:</b>	Daily
<b>TIME:</b>	09h00-09h45, 10h00-10h45, 11h00-11h45, 12h00-12h45, 14h00-14h45, 15h00-15h45, 16h00-16h45
<b>VENUE:</b>	Monument, Thomas Pringle
<b>AUDIENCE:</b>	All
<b>CAPACITY:</b>	35
<b>PRICE:</b>	Free, Timed Entry

The StarLab is an inflatable planetarium geared towards the introduction of the basic principles of astronomy and is a fun way for children to learn about the subject. Enter space and discover our Universe, galaxy and solar system.

[www.saasta.ac.za](http://www.saasta.ac.za)

## KIDS DIG



<b>DATE:</b>	Daily
<b>TIME:</b>	11h00-12h30, 15h00-16h30
<b>VENUE:</b>	Monument, Fort Selwyn Grounds
<b>AUDIENCE:</b>	Grade R-7
<b>CAPACITY:</b>	16
<b>PRICE:</b>	R25

Developed by Children's Discovery Museum, Australia, the Kids Dig encourages children to grab safety gear and tools, start digging to unearth historical artefacts and fossils, and help tell the story of the geological, paleontological and archaeological past of Grahamstown.

[www.childrensdiscovery.org.au](http://www.childrensdiscovery.org.au)

## A CONVERSATION WITH...



<b>DATE:</b>	7 March
<b>TIME:</b>	19h30 for 20h00
<b>VENUE:</b>	Saint's Bistro, 131 High Street
<b>AUDIENCE:</b>	18+
<b>CAPACITY:</b>	30
<b>PRICE:</b>	R180 per person

Unwind after a hectic day at Scifest Africa with good food and good company. Learn about the secret lives of our high-profile scientists over dinner at the Saint's Bistro. The ticket price includes entrance to the event, a meal and a soft drink.

## CARDBOARD CHALLENGE



<b>DATE:</b>	9 March
<b>TIME:</b>	11h00-13h00
<b>VENUE:</b>	Monument, Sun Gallery
<b>AUDIENCE:</b>	All (under 10 - Adult supervision)
<b>CAPACITY:</b>	24
<b>PRICE:</b>	R15

The Global Cardboard Challenge is an annual event that invites the world to build anything awesome out of cardboard, recycled materials and imagination. The challenge aims to instil creative thinking as a core skill and social value, give children opportunities to create and learn based on their passions, foster a community of creative makers, introduce social entrepreneurship at a young age, and use storytelling to celebrate exceptional children and inspire communities. Using the materials supplied, let your imagination go where no imagination has gone before. Visit [cainesarcade.com](http://cainesarcade.com) to watch the video that inspired this movement.

## CITY ON A JOURNEY!



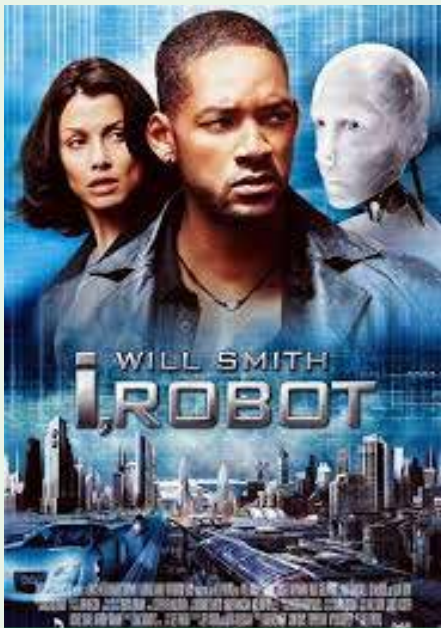
<b>DATE:</b>	10 March
<b>TIME:</b>	13h00-16h00
<b>VENUE:</b>	Makana Botanical Gardens Main Entrance, Lucas Avenue
<b>AUDIENCE:</b>	All
<b>CAPACITY:</b>	800
<b>PRICE:</b>	R5

Takkies, walkers, stilts, rollerblades, skateboards, prams, tricycles, bicycles, and even mobile science centres. Bring your own "wheels" and join us for a fun walk as we celebrate innovation and its journey towards success.

## FILM FESTIVAL

Celebrate the collision of entertainment and science in our science film festival, which presents films related to this year's science festival theme, and aims to inspire a passion for art and science through film. Bring your spare change for the refreshments on sale.

### I, ROBOT (2004)



<b>DATE:</b>	7 March
<b>DURATION:</b>	115 minutes
<b>AGE:</b>	PG 13

In 2035, a technophobic cop investigates a crime that may have been perpetrated by a robot, which leads to a larger threat to humanity.

Directed by: Alex Proyas  
 Starring: Will Smith, Bridget Moynahan, Bruce Greenwood

### TRANSFORMERS: THE LAST KNIGHT (2017)



<b>DATE:</b>	11 March
<b>DURATION:</b>	154 minutes
<b>AGE:</b>	PG

Autobots and Decepticons are at war, with humans on the sidelines. Optimus Prime is gone. The key to saving our future lies buried in the secrets of the past, hidden history of Transformers on Earth.

Directed by: Micheal Bay  
 Starring: Mark Wahlberg, Anthony Hopkins, Josh Duhamel

<b>TIME:</b>	20h00
<b>VENUE:</b>	Monument, Olive Schreiner Hall
<b>CAPACITY:</b>	200
<b>PRICE:</b>	R25

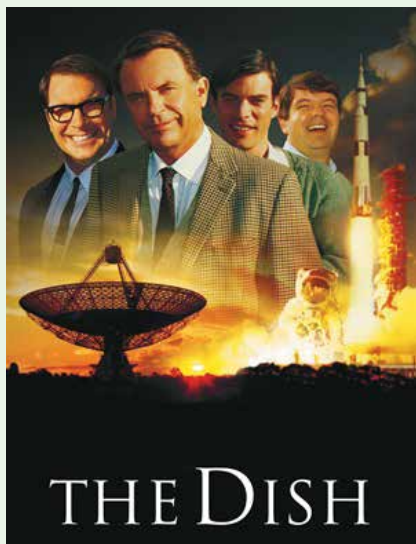
### THE THEORY OF EVERYTHING (2014)



<b>DATE:</b>	12 March
<b>DURATION:</b>	123 minutes
<b>AGE:</b>	PG 13

A look at the relationship between the famous physicist Stephen Hawking and his wife.

Directed by: James Marsh  
 Starring: Eddie Redmayne, Felicity Jones, Tom Prior



### THE DISH (2000) FREE SCREENING - BOOKING ESSENTIAL

<b>DATE:</b>	8 March
<b>DURATION:</b>	101 minutes
<b>AGE:</b>	PG 13

Based on a true story, *The Dish* takes a sometimes comical look at the differing cultural attitudes between Australia and the U.S. while revisiting one of the greatest events in history. It depicts the activities in a control room of a radio telescope doing a job it was not originally expected to do, but in the end did very well. The film dramatises the team-work of a few technicians, who sometimes nearly lose their cool with each other, painted against a backdrop of proud Australian town folk, with visiting dignitaries hoping nothing will go wrong at the crucial moment.

Directed by: Rob Sitch  
 Starring: Sam Neill, Billy Mitchell, Roz Hammond

Free public screening, brought to you by the Australian High Commission in Pretoria.





## DISCOVERY TRAIL



<b>DATE:</b>	7-9 March
<b>TIME:</b>	15h00-16h00
<b>VENUE:</b>	National English Literary Museum, 25A Worcester Street
<b>AUDIENCE:</b>	All
<b>CAPACITY:</b>	20
<b>PRICE:</b>	R25

Join Basil Mills on a journey of discovery through NELM. Observe like a naturalist, guess like a historian and imagine like a poet, as he guides you through bush and bush lore. On this short and gentle hike, you will learn more about Grahamstown's unique natural environment, but also hear tales of some of the authors, playwrights and actors that have passed through the City of Saints. Basil Mills and his Kalahari Ferrari are legendary in Grahamstown. South Africa's Steve Irwin, Big Bas was born one of twins in a sanctuary, nursed by a chimpanzee, performed in a circus as a stunt rider, lived with the San learning their language and tracking skills, and worked as a game ranger in Mpumalanga.

Basil is an Education Officer at the National English Literary Museum and is respected for his extensive knowledge of South Africa's natural and human history, animal rescue and rehabilitation work, restoration projects and historic battle re-enactments, and his use of storytelling to encourage an interest in literature and reading.

## FUN FAMILY MATHS EVENING



<b>DATE:</b>	8 March
<b>TIME:</b>	18h00-20h00
<b>VENUE:</b>	St Andrew's College, Somerset Street
<b>AUDIENCE:</b>	Grade 4-9 and Adults
<b>CAPACITY:</b>	60
<b>PRICE:</b>	R25

Join us for a Fun Family Maths Evening. It will be an exciting evening of brainteasers and stimulating problems. The living maths team are at it again with their whacky antics. Bring something to write with and a pair of scissors. Crazy is the new normal.

## MURDER AT NELM



<b>DATE:</b>	10 March
<b>TIME:</b>	20h00-22h00
<b>VENUE:</b>	National English Literary Museum, Auditorium, 25A Worcester Street
<b>AUDIENCE:</b>	Grade 8+ and Adults
<b>CAPACITY:</b>	40
<b>PRICE:</b>	R25

Join us tonight at NELM, where the eccentric (and somewhat abrasive) book binder and amateur environmentalist Dr Willy Helmsford will be introducing his latest tract: "Death of the Orange River." We invite the sharp, investigative minds of amateur sleuths and armchair Sherlocks to assist us in unpacking Dr Helmsford's analysis of the river's murder. However, we must warn audience members that Dr H's views have not always been popular with the corporate concerns making use of this national waterway, and threats have been received against his person by groups ranging from Agrigor to Zeek River Tours.

## LASER SHOW



<b>DATE:</b>	Daily
<b>TIME:</b>	09h00-09h30; 14h30-15h00
<b>VENUE:</b>	Monument, Guy Butler Theatre
<b>AUDIENCE:</b>	All
<b>CAPACITY:</b>	900
<b>PRICE:</b>	R25

Let LaserX take your breath away as they recreate the best of the Laser Show using a dramatic combination of lasers, ice fog and live performers.

[www.laserx.co.za](http://www.laserx.co.za)

Please note: Ticket sales for this event close 30 minute prior to each show. Visitors must be seated by 08h55 and 14h25, respectively for the morning and afternoon show. No latecomers will be allowed entry into the venue.

## MUSEUM TREASURE HUNT



<b>DATE:</b>	12 March
<b>TIME:</b>	11h00-12h30 (Grade 7-9) 15h00-16h30 (Grade 10-12)
<b>VENUE:</b>	Albany Science Museum, Foyer
<b>CAPACITY:</b>	40
<b>PRICE:</b>	R25

Explore the Eastern Cape's oldest Museum and hunt for clues in its information packed galleries. Along the way learn about the solar system, the story of water, African fishing methods and the diversity of birds. Go deeper into the Eastern Cape's unique fossil heritage, its mammals and invertebrates, and the AmaXhosa use of indigenous plants. Use the information found on your journey through the Albany Natural Sciences Museum to find your next clue, and eventually, hidden treasure!

## PAPER AEROPLANE COMPETITION



<b>DATE:</b>	7, 8, 12, 13 March
<b>TIME:</b>	11h00-12h00
<b>VENUE:</b>	Monument, Sun Gallery
<b>AUDIENCE:</b>	Grade 4-7
<b>CAPACITY:</b>	24
<b>PRICE:</b>	R25

Learn more about the aviation industry, from aircraft design and maintenance to careers in aviation. Choose your call sign and make your own paper aeroplane to enter the Paper Aeroplane Competition. Prizes are up for grabs.

## PUB SCIENCE



<b>DATE:</b>	12 March
<b>TIME:</b>	19h00 till late
<b>VENUE:</b>	The Rat & Parrot, 59A New Street
<b>AUDIENCE:</b>	18+
<b>CAPACITY:</b>	40
<b>PRICE:</b>	Free, Booking Essential

Because you needed an excuse to go to The Rat & Parrot on a Monday night.

Grab a pint, meet our Scifest Africa 2018 contributors, talk to them about their work, watch as they do science using only what they can find in the pub, and later (much later), tell them of your crazy idea to save the world. Cash bar available.

## RHODES UNIVERSITY HIGH SCHOOL QUIZZES



### JUNIOR FINAL

<b>DATE:</b>	12 March
<b>TIME:</b>	10h00-12h00
<b>VENUE:</b>	Monument, Olive Schreiner Hall
<b>AUDIENCE:</b>	All
<b>CAPACITY:</b>	200
<b>PRICE:</b>	Free, Booking Essential

### SENIOR FINAL

<b>DATE:</b>	12 March
<b>TIME:</b>	14h30-16h30
<b>VENUE:</b>	Monument, Olive Schreiner Hall
<b>AUDIENCE:</b>	All
<b>CAPACITY:</b>	200
<b>PRICE:</b>	Free, Booking Essential

Bells, that deer-in-the-headlights look, flashing lights, whispers from the audience and flat panic, are the tell-tale signs of the Rhodes University High School Quiz at Scifest Africa.

Support the brightest in the country, as the top four teams in each category battle it out for the title of champion!

Great prizes are up for grabs and the winning team in the Senior High School Quiz will each win a one-year scholarship to Rhodes University to study science. (Ts & Cs apply)

## REVENGE OF THE SMARTY PANTS



<b>DATE:</b>	8 March
<b>TIME:</b>	19h30 for 20h00
<b>VENUE:</b>	Monument, Restaurant
<b>AUDIENCE:</b>	18+
<b>CAPACITY:</b>	10 teams
<b>PRICE:</b>	R150 per team (max 6 people per team)

Scifest Africa presents its very own Battle of the Brains. Locals are invited to enter teams in a general knowledge challenge with a difference and show our visiting geniuses a thing or two... or three. Cash bar available and supporters are welcome.

## SANSA SATELLITE BUILDING COMPETITION



<b>DATE:</b>	9 March
<b>TIME:</b>	10h00-12h00
<b>VENUE:</b>	Monument, Shakespeare Pub
<b>AUDIENCE:</b>	Grade 4-6
<b>CAPACITY:</b>	30
<b>PRICE:</b>	Free, Booking Essential

What is a satellite? What are the uses of a satellite? Do you think you know what goes into building a great satellite? Given the time pressure, do you think you could build one? Book your spot and get building!





## STEM OLYMPICS

### 7 March - The Tower Challenge

Your team will be given a box of straws. Using only the straws and nothing else, you will need to build the highest free-standing tower that you can. It may not lean on anything for support. It has to be free-standing for a minimum of one minute. Go too high and you stand the risk of collapse. Go too low you stand the risk of being defeated. Think carefully about your strategy.

### 8 March - Brain Power

Each team will receive a fun set of puzzle type activities. Using your teams combined brainpower, will you be able to outsmart the opposing teams? Thinking outside of the box is essential!

### 9 March - Brain Crunch

Take a little bit of logic, a little bit of thinking outside of the box and a never-give-up attitude. We dare you to complete tricky tasks. Show the other teams what you are made of!

### 12 March - Brain Massage

Each team will receive a fun set of puzzle type activities. Using your teams combined brainpower, will you be able to outsmart the opposing teams? Thinking outside of the box is essential.

### 13 March - Eggciting Egg Drop

With the limited items that your team is given, the challenge is on to build a protective housing for your precious egg. You will then drop your egg from various heights. The egg that survives the drop in the best condition will win the challenge.

<b>DATE:</b>	7-9, 12, 13 March
<b>TIME:</b>	15h00-16h00
<b>VENUE:</b>	Monument, Fynbos Hub
<b>AUDIENCE:</b>	Grade 4-12
<b>CAPACITY:</b>	24
<b>PRICE:</b>	Free, Booking Essential

# BURSARY APPLICATIONS NOW OPEN!



NATIONAL METROLOGY OF INSTITUTE OF SOUTH AFRICA BURSARIES

### WHO SHOULD APPLY?

Undergraduate and Postgraduate degree students who are registered or in the process of registering at a recognised South African university in any of the following fields: **Engineering (Electrical/Electronic, Mechanical), Materials Science, Physics and Chemistry.**

### REQUIREMENTS:

- Applicants must be South African.
- The minimum is a 65% average at the current level of study for registered student.
- Learners in Grade 12 that obtained an aggregate of at least 65% in grade 11.
- Learners in possession of grade 12 exemption certificate with acceptable symbols.

**CLOSING DATE FOR APPLICATIONS:**

**31 JULY ANNUALLY**

### HOW TO APPLY

Please visit our website to download the application form:  
[www.nmissa.org](http://www.nmissa.org)  
 under internships and bursaries.

EDUCATIONAL THEATRE/SCIENCE SHOWS/  
VIRTUAL TOURS

<b>VENUE:</b>	Monument, Guy Butler Theatre
<b>CAPACITY:</b>	900
<b>PRICE:</b>	R25

**NASA Johnson Space Center**  
NASA Robotics Lab Virtual Tour



**AUDIENCE:** All

NASA does some amazing things! Using robots to explore space is one of NASA's cutting-edge technologies. They use robots and robotic tech to explore the entire solar system. Robotic tech has long been used from rovers on Mars to deep space probes out on the edges of our solar system. Robotic tech is now advancing to become assistance for astronauts as we begin sending humans deeper into space! Located in Houston, Texas USA, the NASA Johnson Space Center has been at the centre of this effort since the 1990s! What will the robots of the future look like? How might this advanced space technology change the robots we will be using here on Earth? What does the future hold for man-machine collaboration? NASA JSC invites you to take an exciting tour of NASA's famous Building 9 where all of this is happening. Come and meet the robots of the future!

<https://www.nasa.gov/centers/johnson/home/index.html>

**Palaeontological Scientific Trust (PAST)**  
Walking Tall: The Tree of Life




**AUDIENCE:** Grade 8+

A professional physical theatre production and science workshop presented by PAST's acclaimed Walking Tall Educational Theatre Project. The theatre production depicts the shared origins of life and humankind, taking audiences on a 4.6 billion-year journey through time from the origins of the Earth to present day, focusing on the major stages of human evolution. It shows how an understanding of the shared origins of humankind is a powerful tool for combatting discrimination, and how the shared origins of all living things help to promote the conservation of nature and biodiversity. Walking Tall has reached over 1.3 million school children and teachers across Africa and abroad". The workshop addresses aspects of the Life Sciences curriculum related to evolution, including genetics, natural selection and deep time.

PAST is a public benefit organisation based in Johannesburg dedicated to the protection preservation and promotion of scientific evidence for our shared origins in Africa and to making this evidence valuable to the future of humankind. PAST's vision is to inspire curiosity and appreciation for ancient heritage among Africa's youth, and to develop global scientific leadership by African origin scientists. Since 1994, the organisation has brought together scientists, business, government and communities to support research, education and public awareness in the sciences related to our origins.

[www.past.org.za](http://www.past.org.za)

**Sci-Bono Discovery Centre**  
Wonders of the Earth



**AUDIENCE:** All

The Earth is a system of complex interactions with an enormous amount of processes that shape it into what it is now. From the gases that make up our atmosphere, to the sun which provides us with energy and the natural disasters like earthquakes, floods, tornadoes and volcanic eruptions that strike without warning, join us as we explore the wonders of our earth and investigate nature's might in this exciting show that will leave you on the edge of your seat.

Sci-Bono is a world-class science centre that supports maths, science and technology education and offers innovative, dynamic learning experiences that contribute to building South Africa's science, engineering and technology capacity.

[www.sci-bono.co.za](http://www.sci-bono.co.za)





## University of Bristol, UK

## A Pollutant's Tale



**AUDIENCE:** Grade 4+

Join us on a journey through the Earth's atmosphere, where we discover why it has so unique a composition in comparison with the others in the solar system. We will use exciting demonstration experiments to aid the journey as we consider stratospheric ozone depletion, air pollution and climate change. Latest data on all three topics will be presented and discussed. The talk is aimed at a general audience and is suitable for primary and secondary school children and the general public.

Dudley Shallcross is a Professor of Atmospheric Chemistry and CEO of the Primary Science Teaching Trust. He has wide ranging interests in atmospheric science and science education. One of his children will start as a primary school teacher in September, two are training to be Pharmacists and the last is a football referee.

[www.bristol.ac.uk](http://www.bristol.ac.uk)

**VENUE:** Monument, Guy Butler Theatre  
**CAPACITY:** 900  
**PRICE:** R25

## University of East Anglia, UK

## Kitchen Chemistry Seconds



**AUDIENCE:** Grade 3+

Dr Stephen Ashworth returns with his second set of dramatic experiments using everyday materials and items you might find in your grocery cupboard, under your bed, in the bottom of a drawer, under the sink, or in the garage as a chemistry set. See how to rip stuff apart, burn without air, make new materials, stabilise ultrathin layers of water, speed up chemical reactions, and use chemistry to generate electricity.

Dr Stephen Ashworth obtained his D.Phil. in Chemistry from Oxford University. He is currently a Reader in Chemistry, and Head of Natural Sciences at the University of East Anglia in Norwich. He became an adopted SAffie after his three month Kitchen Chemistry tour of South Africa in 2013.

Dr Ashworth has been involved in science communication for nearly two decades and has presented over 600 public demonstration lectures to audiences around the world.

[www.kitchenchemistry.eu](http://www.kitchenchemistry.eu)

This presentation has been sponsored by the University of East Anglia.

## NAUTILUS

## Nautilus Live



**DATE:** 10 March

**TIME:** 15h00-16h00

**VENUE:** Monument, Olive Schreiner

**AUDIENCE:** All

**CAPACITY:** 200

**PRICE:** R25

In a world with lightning fast satellite and optical fibre connections, it is possible to broadcast real-life, real-time, scientific explorations. The Ocean Exploration Trust (OET) shares the forefront of ocean research with everyone around the world from three kilometres underwater. How do they do it? And what mysteries await us at the bottom of the ocean? Rachel Rayner was part of the OET's Corp of Exploration from 2015 - 2017. At this show, meet members of the team bringing marine science, robotic technology, geology and aquatic archaeology into public view, and hear tales of innovation and adventure from the deep sea.

<https://nautiluslive.org/>

	7 March	8 March	9 March	10 March	11 March	12 March	13 March
<b>10:30-11:30</b>	Kitchen Chemistry Seconds	Walking Tall	Wonders of the Earth	A Pollutants Tale	Kitchen Chemistry Seconds	Wonders of the Earth	Kitchen Chemistry Seconds
<b>12:30-13:30</b>	Walking Tall	Kitchen Chemistry Seconds	Walking Tall	Wonders of the Earth	Walking Tall	A Pollutants Tale	Walking Tall
<b>16:00-17:00</b>	Wonders of the Earth	A Pollutants Tale	NASA Robotics Lab Virtual Tour	Walking Tall	Wonders of the Earth	Kitchen Chemistry Seconds	A Pollutants Tale

## SCIENCE CAFÉ



<b>DATE:</b>	8 March
<b>TIME:</b>	17h00-18h00
<b>VENUE:</b>	Handmade Coffees, Festival Gallery, 38 Somerset Street
<b>AUDIENCE:</b>	Grade 12+
<b>CAPACITY:</b>	20
<b>PRICE:</b>	R25

Topic: *Embracing the Fourth Industrial Revolution... is South Africa ready?*

Science Café is a global initiative that brings the general public together with scientists and experts together to talk about science topics that are interesting, timely and often controversial.

Hosted in a chilled setting by a local personality and open to those with an enquiring mind, these sessions are bound to unravel into lively conversation, raucous laughter and heated debate.

## SCIENCE PICNIC IN THE PARK



<b>DATE:</b>	10 March
<b>TIME:</b>	10h00-13h00
<b>VENUE:</b>	Makana Botanical Gardens, Lucas Avenue
<b>AUDIENCE:</b>	All
<b>CAPACITY:</b>	300
<b>PRICE:</b>	Free

Bring a picnic basket and blanket and join our Scifest Africa 2018 contributors for a day of interactive, playful and fun science activities in Grahamstown's Botanical Gardens, including arts and crafts, a discovery trail, games, live entertainment, and science demonstrations.

## SCIKIDS



<b>DATE:</b>	7- 9, 12, 13 March
<b>TIME:</b>	09h00-10h00, 11h00-12h00, 13h00-14h00
<b>VENUE:</b>	Victoria Girls' High School, Templeton Gymnasium (Entrance on Huntley Street)
<b>AUDIENCE:</b>	Grade R-3
<b>CAPACITY:</b>	45
<b>PRICE:</b>	Free, Booking Essential

Scikids is the first introduction to science for our younger visitors. Fun science demonstrations and activities run by High School pupils for Foundation Phase pupils to spark a love of science and learning. Offered in English, Afrikaans and isiXhosa.

## SOAP BOX DERBY



<b>DATE:</b>	11 March
<b>TIME:</b>	10h00
<b>VENUE:</b>	Monument, Front Entrance
<b>AUDIENCE:</b>	Grade 8+ and Adults
<b>CAPACITY:</b>	8 teams
<b>PRICE:</b>	R40 per team

Do you have what it takes to build the next generation automotive model? Teams of four will be required to design, build and race a soap box car with a difference in this thrilling full-day workshop.

## SPEED-DATE-A-SCIENTIST



<b>DATE:</b>	7-9, 12, 13 March
<b>TIME:</b>	12h00-13h00
<b>VENUE:</b>	Monument, Fynbos Hub
<b>AUDIENCE:</b>	Grade 8-12
<b>CAPACITY:</b>	24
<b>PRICE:</b>	R5

Learn more about science, scientists and science careers in this fast-paced event. Groups of two to four learners will be coupled with a scientist, and will then have three minutes to introduce themselves to the scientist, and finally ask the questions they have always been dying to ask. After three minutes, learners will move to the next scientist, and the fun starts all over again.

This event is presented in association with the Rhodes University Biotechnology Innovation & Engagement Centre

## STAR PARTY



<b>DATE:</b>	10 March
<b>TIME:</b>	18h00-20h00
<b>VENUE:</b>	National English Literary Museum, Foyer, 25A Worcester Street
<b>AUDIENCE:</b>	All
<b>CAPACITY:</b>	200
<b>PRICE:</b>	R25

Innovate!

Scifest Africa and the Rhodes University Astronomy Society (AstroSoc) invite you to a Star Party! Look out for the games, arts and crafts and the opportunity to look through a telescope... stargazing!



## SUNSET SHOW



<b>DATE:</b>	7-12 March
<b>TIME:</b>	17h00-17h45
<b>VENUE:</b>	Monument, Olive Schreiner Hall
<b>AUDIENCE:</b>	All
<b>CAPACITY:</b>	200
<b>PRICE:</b>	R5

Saturated after a hectic day at Scifest Africa? Miss one of the science shows on the programme? Just in the mood for some fun? Join some of our top science show presenters for your daily barrel of laughs.

## COMEDY NIGHT



<b>DATE:</b>	11 March
<b>TIME:</b>	18h00 - 20h00
<b>VENUE:</b>	Monument, Restaurant
<b>AUDIENCE:</b>	18+
<b>CAPACITY:</b>	50
<b>PRICE:</b>	R50 for two

Drawing on his sleight-of-hand and magical knowledge, Prof Blumenthal will wow the audience with his comedy skills. Looking for a good laugh in science, then bring a friend and join us during this eventful evening.

## COOKING WITH SCIENCE



<b>DATE:</b>	10 March
<b>TIME:</b>	17h00-18h00
<b>VENUE:</b>	The Rustic Route, 1 Scotts Avenue
<b>AUDIENCE:</b>	All
<b>CAPACITY:</b>	30
<b>PRICE:</b>	R25

Cook up a storm and learn the basics of food using science in preparing the perfect meal.

## BOOK LAUNCH: SKIN WE ARE IN PALAEOANTHROPOLOGICAL SCIENTIFIC TRUST (PAST)

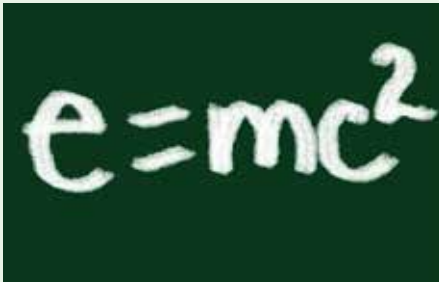


<b>DATE:</b>	9 March
<b>TIME:</b>	12h00-14h00
<b>VENUE:</b>	National English Literary Museum, Auditorium, 25A Worcester Street
<b>AUDIENCE:</b>	All
<b>CAPACITY:</b>	100
<b>PRICE:</b>	Free, Booking Essential

'Skin We Are In' is a book on the origins of our skin colour. It is inspired by the need in South Africa for accessible, authoritative scientific education on human physical diversity and concepts of race targeted for children and the youth. The book explains that skin color is an adaptation to sunlight, and that it is genetically unrelated to other traits. The book is about understanding the unity and diversity of humans through the lens of evolution.

Authors: Nina J. Jablonski and Sindiwe Magona

## TALKSHOPS

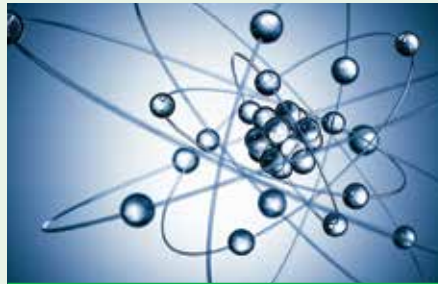
COUNCIL FOR THE  
BUILT ENVIRONMENTBUILDING BLOCKS  
FOR A CAREER

<b>DATE:</b>	Daily
<b>TIME:</b>	13h00-14h00, 15h00-16h00
<b>VENUE:</b>	Monument, Shakespeare Pub
<b>AUDIENCE:</b>	Grade 7-12
<b>CAPACITY:</b>	50
<b>PRICE:</b>	R25

The Council for the Built Environment (CBE), located in Pretoria, is a government body under the Department of Public Works. It promotes awareness on careers available in the building construction sector – these being architecture, engineering, landscape architecture, construction project management, property valuation, and quantity surveying.

NATIONAL ENGLISH  
LITERARY MUSEUM

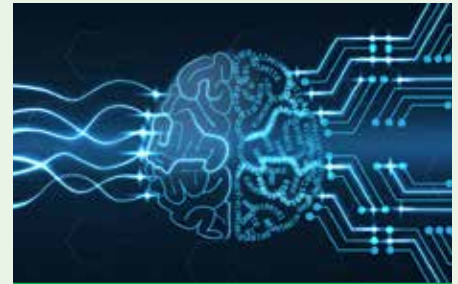
## INNOVATIVE WORDS



<b>DATE:</b>	8 March
<b>TIME:</b>	11h00-12h00
<b>DATE:</b>	12 March
<b>TIME:</b>	18h00-19h00
<b>VENUE:</b>	National English Literary Museum, Activity Room 2, 25A Worcester Street
<b>AUDIENCE:</b>	Grade 10+
<b>CAPACITY:</b>	100
<b>PRICE:</b>	R25

The National English Literary Museum presents an evening of South African poetry inspired by science. This is an opportunity to listen to some poetry, share poems you love or to read or perform your own work. Science and poetry have a closer link than you might think. Many poets work in the field of science and technology or are inspired by such themes. The natural world is a constant inspiration for writers.

Crystal Warren is manager of the Curatorial Division at NELM. The division collects and preserves South African literature. Crystal is one of the facilitators of the ISEA short course in creative writing and has run a number of creative writing workshops. She has edited *New Coin* poetry magazine and is also a published writer, with a new collection of poems coming out in 2018.

NNA LE BOKAMOSO  
SCIENCE AND ARTS  
ACADEMYMY SCIENCE  
TEACHER IN MY  
POCKET

<b>DATE:</b>	7 March
<b>TIME:</b>	11h00-12h00
<b>VENUE:</b>	Monument, Olive Schreiner Hall
<b>AUDIENCE:</b>	Grade 10+
<b>CAPACITY:</b>	200
<b>PRICE:</b>	R25

What is a teacher in the fourth industrial revolution? With the dominant use of computers today, it is not farfetched to question the place of a teacher and the school in the learning and teaching of Science. Teacher agency has become a thing of the past, with the growing self-deterministic norm of learning about the world and the systems related to it. This talk addresses complex issues relating to teaching, learning and the importance of interdisciplinary research in Science. The talk provides a three dimensional model of how the relationship between humans and machines may be enhanced without compromising one for the other.